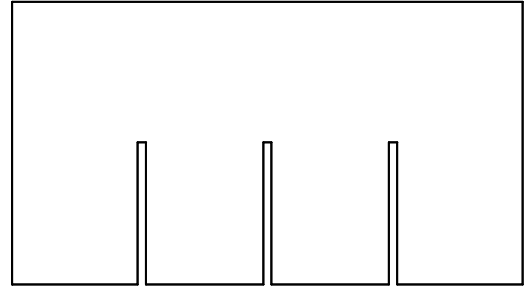
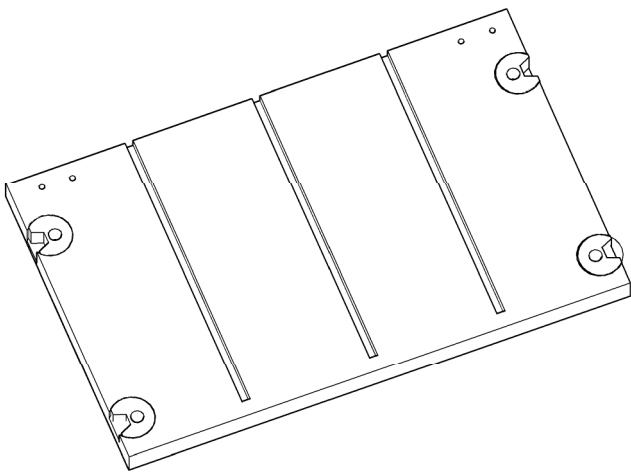


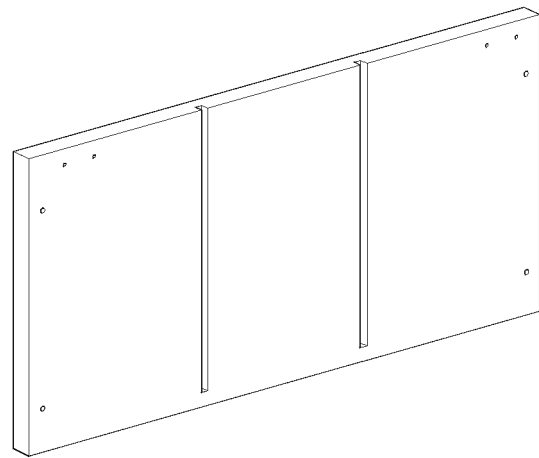
A x 3



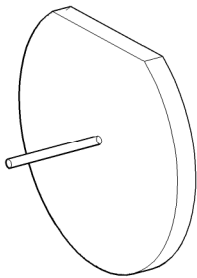
B x 2



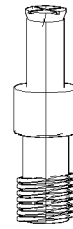
C x 2



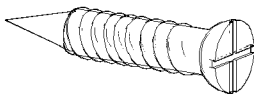
D x 2



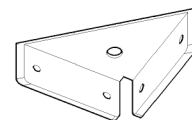
E x 8



F x 8



G x 16



H x 4

- A : Shelf with two cut outs x3
- B : Divider with three cutouts x 2
- C : External panel three grooves x 2
- D : External panel two grooves x 2
- E : Cap x 8
- F : Dowel Screw x 8

- G: Screw x 16
- H :Corner brackets x 4

All cams are supplied fitted.

Note :Assembly will also require a Long Pozi driver and a Short Pozi driver.

REM

T: 01282 619977
F: 01282 619617

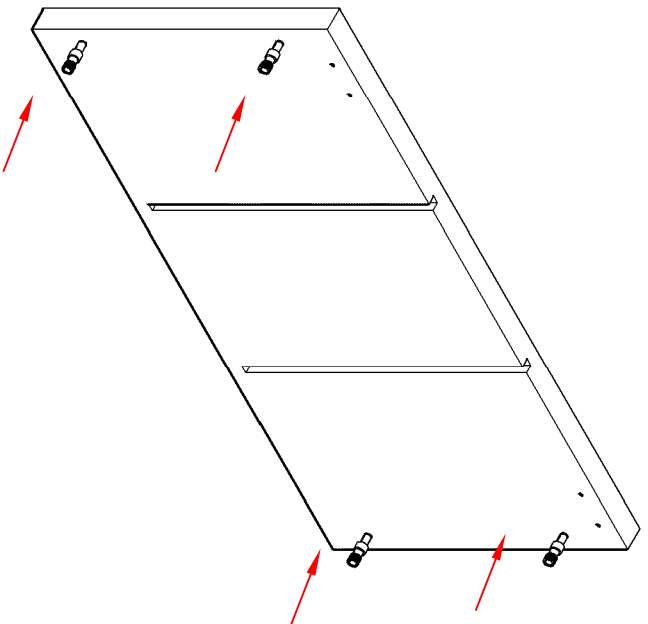
Colour store:instructions

06502

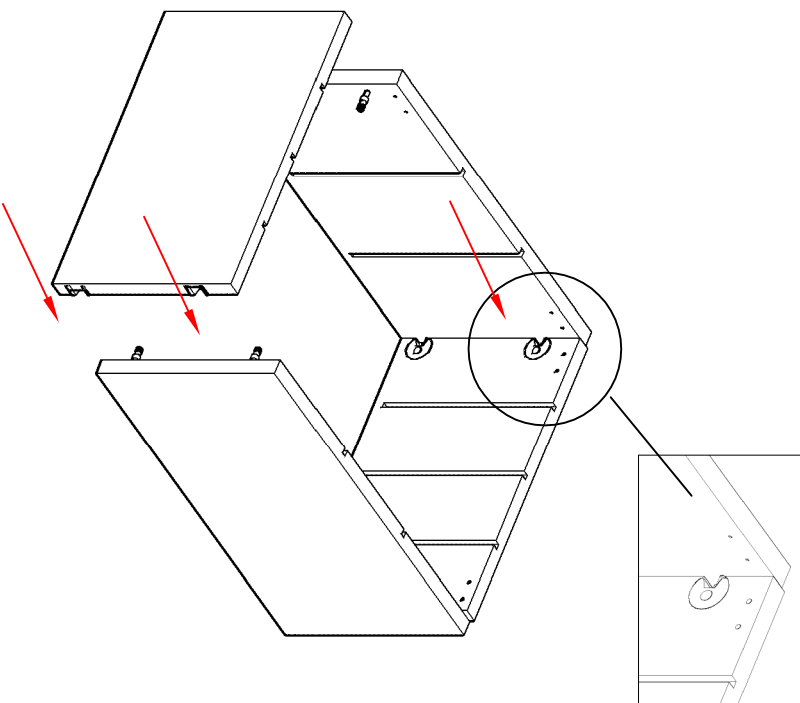
Component Details

Date: 03/03/2009 – Edition 1

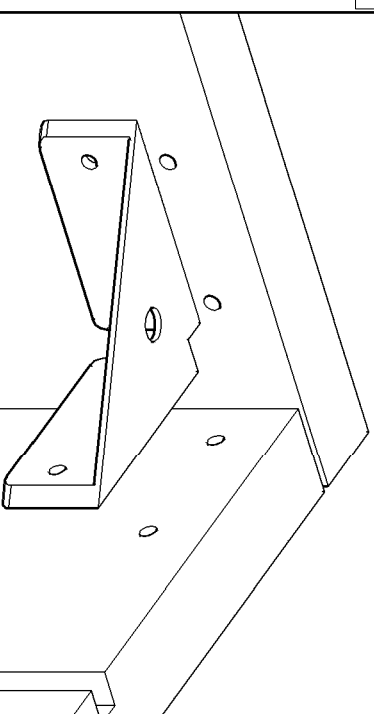
Produced by: HT



1. Screw 4 dowel screws (F) onto 2 x panel D.



2. Assemble panels C and D. Tighten all 8 cams using a pozi screwdriver to create the box.



3. Using screws G screw corner bracket H to all four corners.

REM

T: 01282 619977
F: 01282 619617

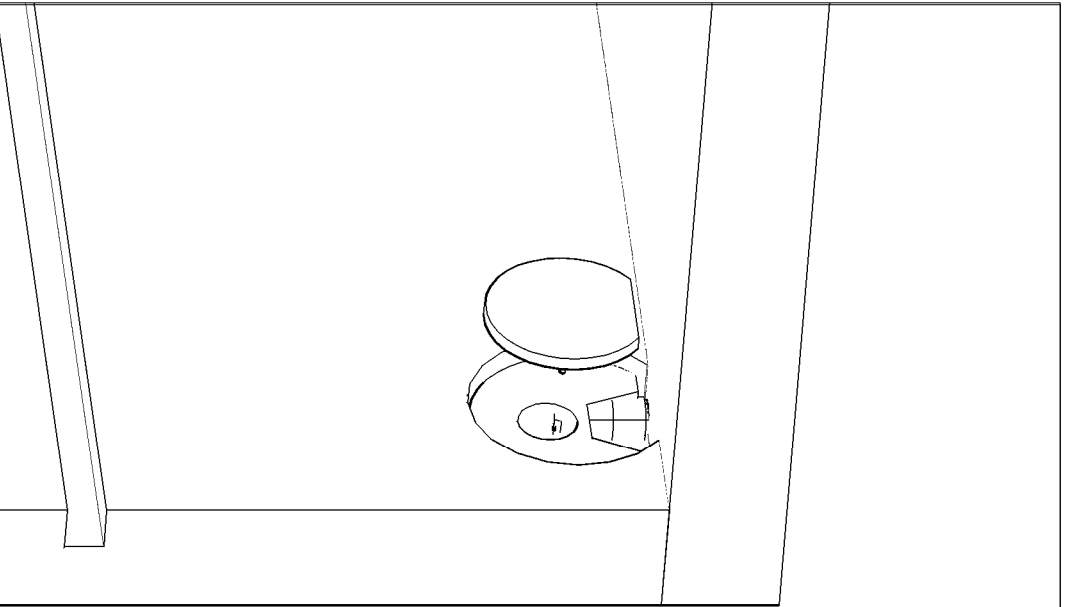
Colour store:

06502

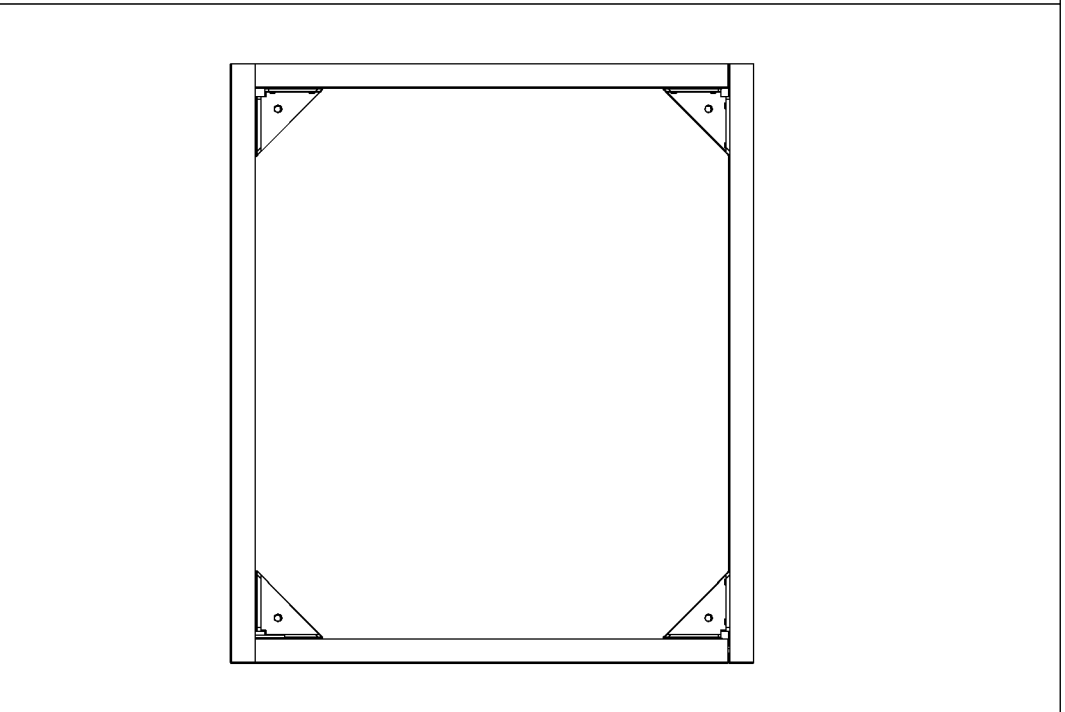
Assembly Instruction Sheet 1/3

Date: 03/03/2009 – Edition 1

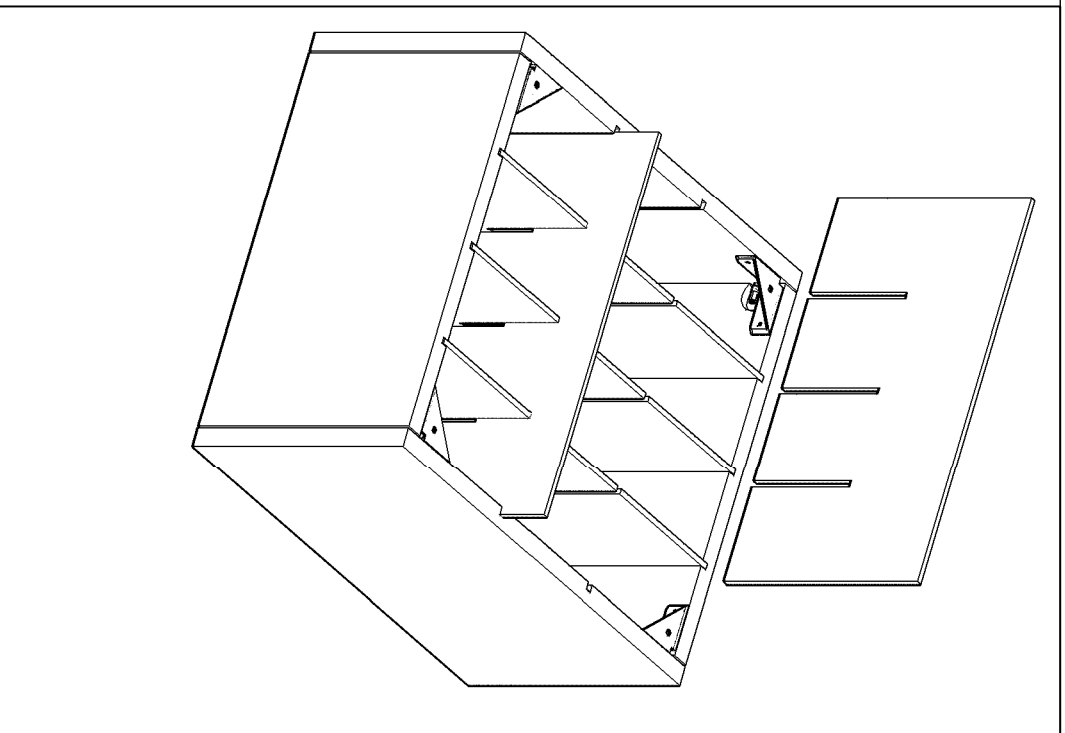
Produced by: HT



4. Cover caps E placed over all 8 cam bolts.



5. Offer box up to the wall so that fixings points can be found for screwing the unit to the wall. Drill wall as necessary. Note REM do not supply wall fixings.



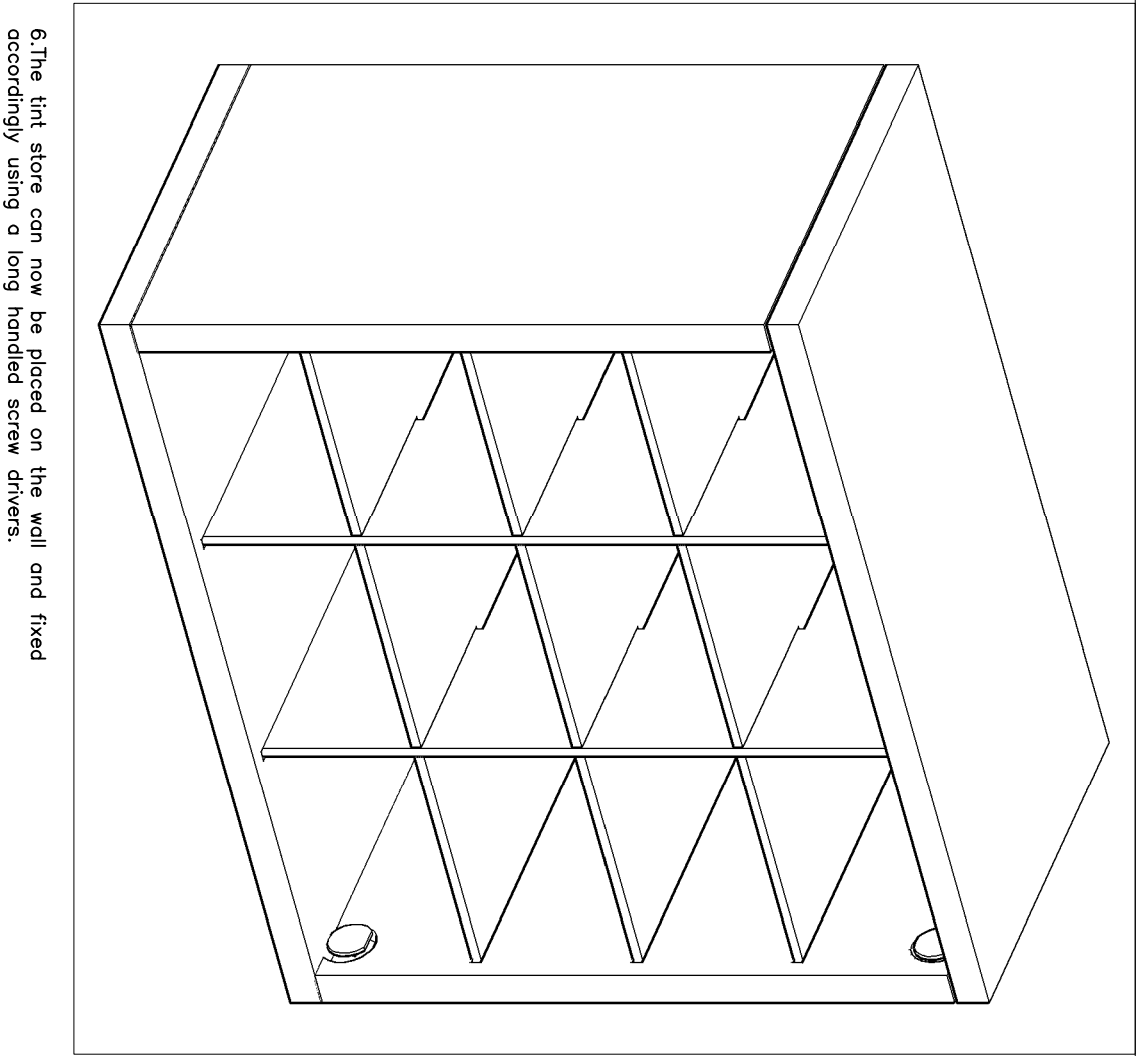
6. Return the box to the assembly area and insert shelves A, X 3 and dividers B, X 2.

REM

T: 01282 619977
F: 01282 619617

Colour store:
06502

Assembly Instruction Sheet 2/3
Date: 03/03/2009 – Edition 1
Produced by: HT



6.The tint store can now be placed on the wall and fixed accordingly using a long handled screw drivers.

Colour store:

06502

Assembly Instruction Sheet 3/3

Date: 03/03/2009 – Edition 1

Produced by: HT

REM

T: 01282 619977
F: 01282 619617